

kuraray

CLEARFIL™ SA CEMENT

A Self-Adhesive, Self-Etching Resin Cement

Features of Glass Ionomer, Benefits of Resin Cement, and Kuraray's Legendary Adhesive Technology

- **Easy to use, self-adhesive**, no primers or bonding agents needed
- **Durability and reliability with all indirect restorations**, including zirconia
- **Exceptional handling**, especially with excess cement removal
- **Very low technique sensitivity**, with consistent bond strength even to overdry and wet dentin/enamel
- **High bond strength and excellent marginal sealing**; protection from marginal leakage
- **Low solubility and low film thickness** for optimum cementation
- **Fluoride release**, without degradation



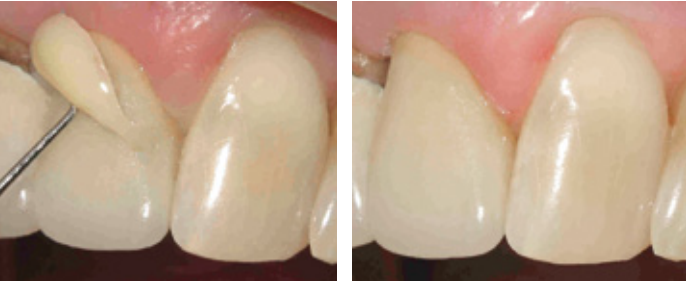
Kuraray America, Inc.

600 Lexington Avenue, New York, NY 10022 | 800.879.1676 | kuraraydental.com | ©2010 Kuraray America, Inc.

Not All Self-Adhesive Resin Cements Are Created Equal!

Kurararay scientists again provide new meaning to self-adhesive cements. **CLEARFIL™ SA CEMENT**, like most self-adhesive cements, is easier and faster to use than other types of resin cements. **CLEARFIL™ SA CEMENT**, however, goes a step further and solves two very significant problems faced with resin cements: removal of excess cement and bonding to zirconia-based restorations. This cement solves both of these challenges by providing easier cement removal and true bonding to zirconia-based crowns/bridges; onlays and inlays. Another unique feature of **CLEARFIL™ SA CEMENT** is decreased technique sensitivity - the adhesive bonding is easy, reliable, durable and long-lasting, even if there is slight moisture on the preparation. Use of this cement provides almost no post-operative sensitivity.

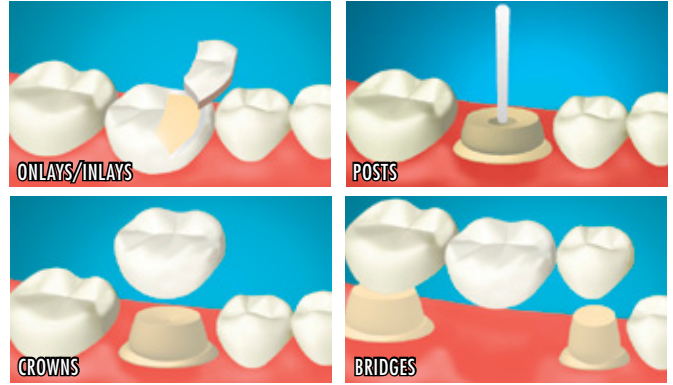
Remaining portion of cement is completely removed from gingival pocket



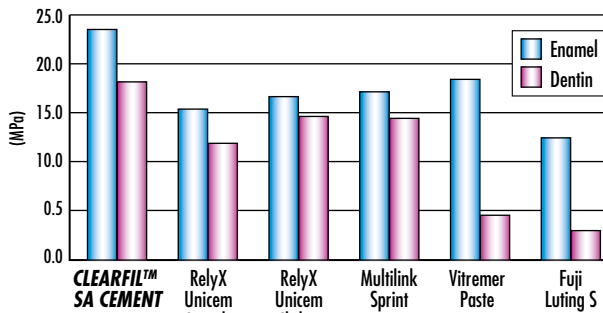
After the tack cure, excess cement can be removed easily in one piece

(Source: Arlen D. Lackey, DDS, CA)

Applications



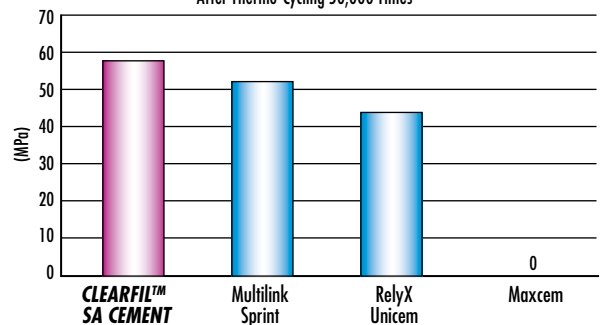
Shear Bond Strength to Tooth Structure



N. Iwamoto, S. Uctasli, M. Ikeda, M. Nakajima, J. Tagami, Tokyo Medical and Dental University P-24 International Symposium of Adhesive Dentistry 2008, Kanazawa, Japan

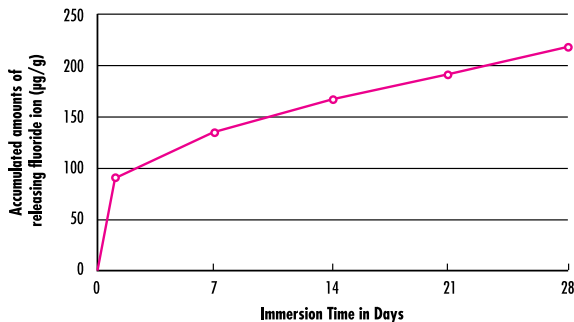
Shear Bond Strength to Zirconia (Cercon)

After Thermo-Cycling 50,000 Times



S. Murahara, H. Minami, H. Kurashige, S. Hori, K. Sakoguchi, T. Onizuka, and T. Tanaka, Kagoshima University, #2298 IADR 2008 Toronto

Fluoride Release Data



- SA Cement contains polymer encapsulated sodium fluoride
- Physical property can be maintained by the coated layer of NaF even after fluoride releasing.

Warranty: All data, other than from quoted articles herein, are based on actual measurements performed by Kuraray Medical Inc. Kuraray Medical Inc. will replace any product that is proved to be defective. Neither Kuraray Medical Inc. nor the distributor accepts liability for any loss or damage, direct, consequential or special, arising out of the application or use of or the inability to use these products. Before using, the user should determine the suitability of the products for the intended use and the user assumes all risk and liability whatsoever in connection therein. CLEARFIL™ SA CEMENT and Kuraray Medical Inc. products are available only through Kuraray Authorized dealers. CLEARFIL™ is a trademark of Kuraray Medical Inc. Multilink is a trademark of Ivoclar Vivadent. RelyX, Unicem and Vitremer are trademarks of 3M/ESPE. Maxcem is a trademark of Kerr. © 2010 Kuraray America, Inc.

Related Products:

#2831KA CLEARFIL™ DISPENSER

- Easily controlled dispenser
- Good for endodontic use



CLEARFIL™ SA CEMENT Products

Item Number	Product Name	Contents
#2800KA	CLEARFIL™ SA CEMENT (universal)	1 Syringe for 1 shade 8.3g (4.6ml) 20 Mixing tips
#2801KA	CLEARFIL™ SA CEMENT (white)	1 Syringe for 1 shade 8.3g (4.6ml) 20 Mixing tips
#2810KA	CLEARFIL™ SA CEMENT VALUE KIT (universal)	3 Syringes for 1 shade 8.3g (4.6ml) 40 Mixing tips 10 Endo tips
#2811KA	CLEARFIL™ SA CEMENT VALUE KIT (white)	3 Syringes for 1 shade 8.3g (4.6ml) 40 Mixing tips 10 Endo tips
#2820KA	CLEARFIL™ SA CEMENT Mixing Tip	20 Mixing tips
#2823KA	CLEARFIL™ SA CEMENT Endo Tip	20 Endo tips